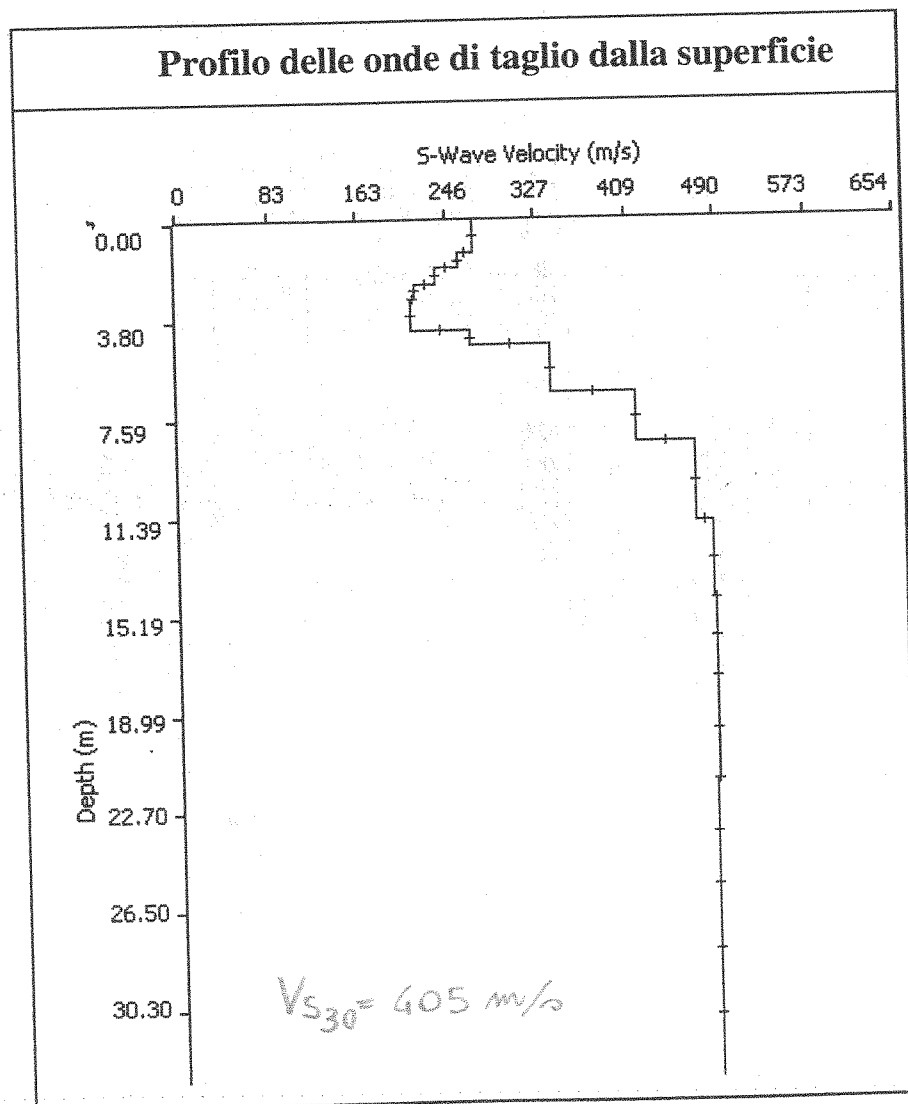


**INDAGINI GEOFISICHE REPERITE NEGLI
ARCHIVI COMUNALI**

GeoEcho
Indagini Geofisiche

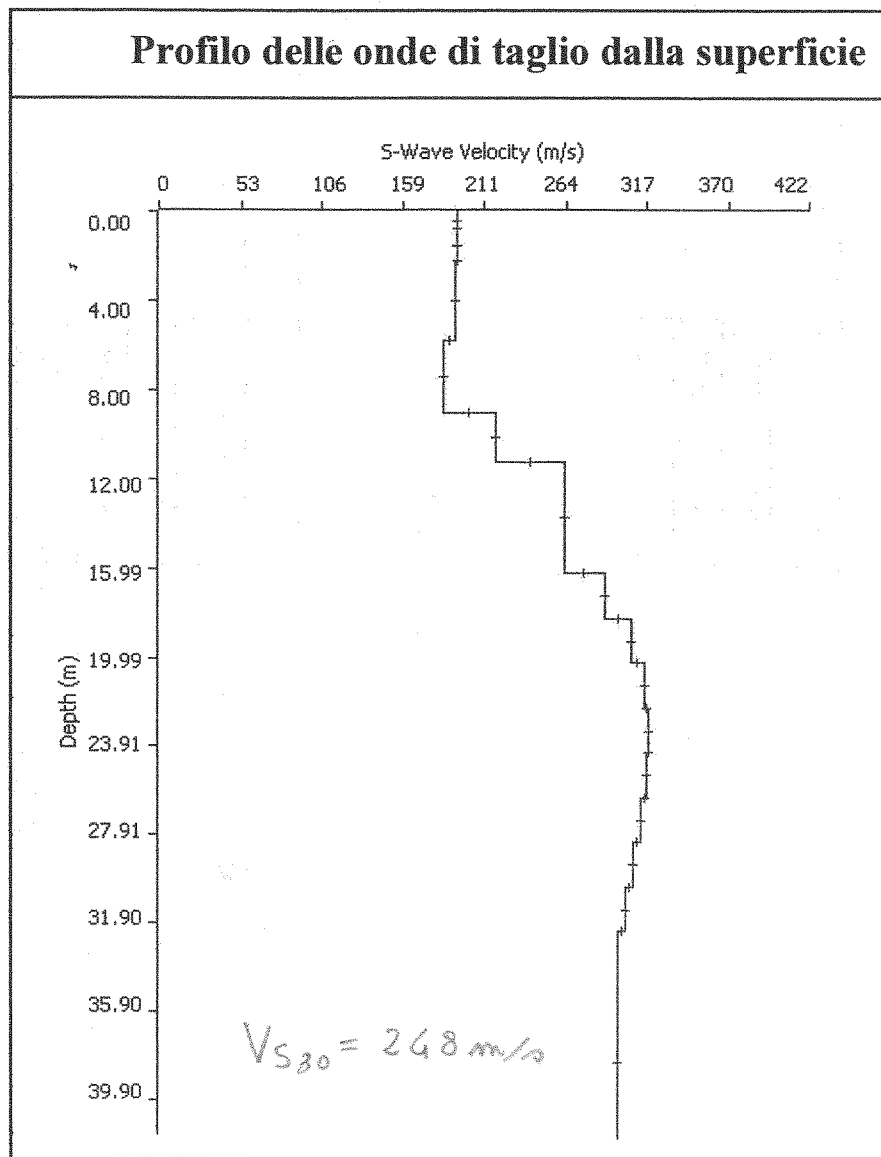
Thickness	Depth	Vs	Vp	Poisson	Density
1.2	0	271	542	0.333	1.8
0.6	1.2	257	514	0.333	1.8
0.6	1.8	236	472	0.333	1.8
0.6	2.4	217	434	0.333	1.8
1.2	3	214	428	0.333	1.8
0.6	4.2	268	536	0.333	1.8
1.8	4.8	340	679	0.333	1.8
2	6.6	418	835	0.333	1.8
3	8.6	470	939	0.333	1.8
3	11.6	487	973	0.333	1.8
3	14.6	489	977	0.333	1.8
4	17.6	488	975	0.333	1.8
4	21.6	487	973	0.333	1.8
5	25.6	487	973	0.333	1.8
	30.6	487	973	0.333	1.8


Tabella 1: modello sismico monodimensionale.



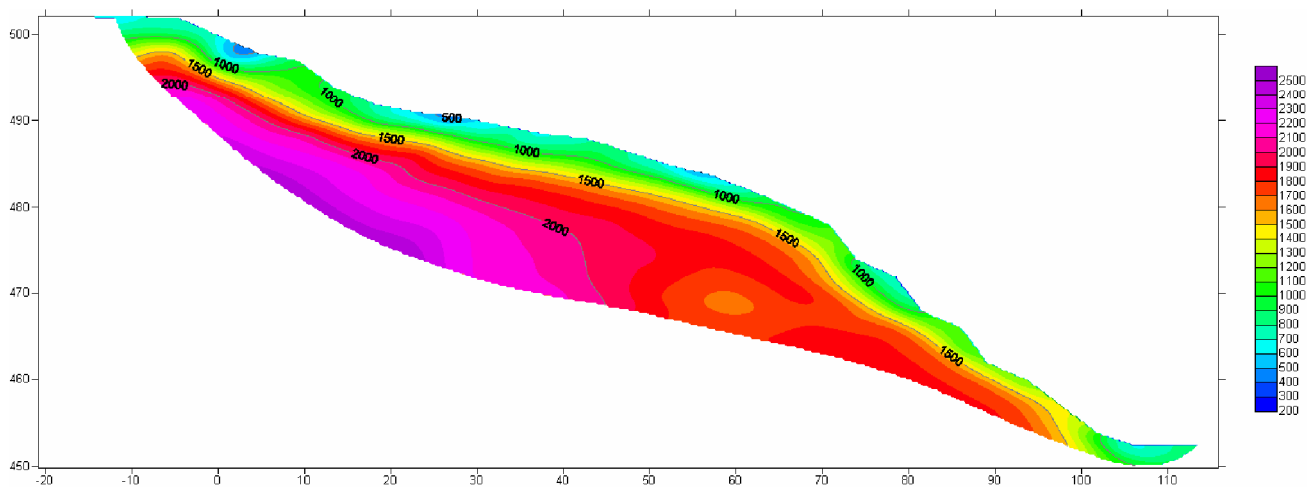
Thickness	Depth	Vs	Vp	Poisson	Density
0.8	0	194	388	0.333	1.8
1.4	0.8	194	388	0.333	1.8
3.6	2.2	193	386	0.333	1.8
3.2	5.8	185	370	0.333	1.8
2.2	9	218	436	0.333	1.8
5	11.2	263	526	0.333	1.8
2	16.2	289	578	0.333	1.8
2	18.2	306	612	0.333	1.8
2	20.2	315	630	0.333	1.8
2	22.2	318	636	0.333	1.8
2	24.2	317	634	0.333	1.8
2	26.2	313	626	0.333	1.8
2	28.2	308	616	0.333	1.8
2	30.2	303	606	0.333	1.8
	32.2	298	596	0.333	1.8

Tabella 1: modello sismico monodimensionale.




 IGEA S.A.S.	INDAGINI GEOLOGICHE ED AMBIENTALI						
	<small>DOCUMENTI</small> 2008 SAS2008 29 08 004 1						<small>FOGLIO</small> 133

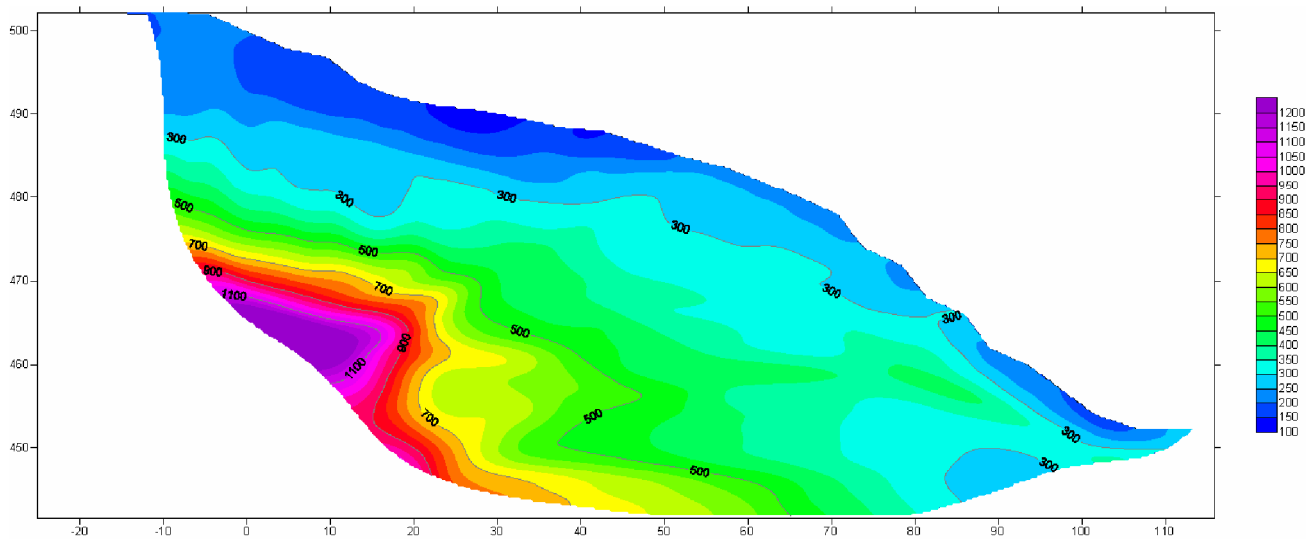
LINEA 13
ELABORAZIONE TOMOGRAFICA ONDE P




IGEA s.a.s. di Guglielmo Braccesi e C. - Sede Legale Via Sappalatese, 128 - 50032 Borgo San Lorenzo (FI)
Sede Operativa Viale Mazzini, 4 - 50039 Vicchio di Mugello (FI) - Tel. e Fax 055 944025
C.F./P.I. 05351980486 - Iscr. C.C.I.A.A. Firenze R.I. 05351980486 - R.E.A. 540470 - www.igeasas.it

 IGEA S.A.S.	INDAGINI GEOLOGICHE ED AMBIENTALI						
	<small>DOCUMENTI</small> 2008 SAS2008 29 08 004 1						<small>FOGLIO</small> 200

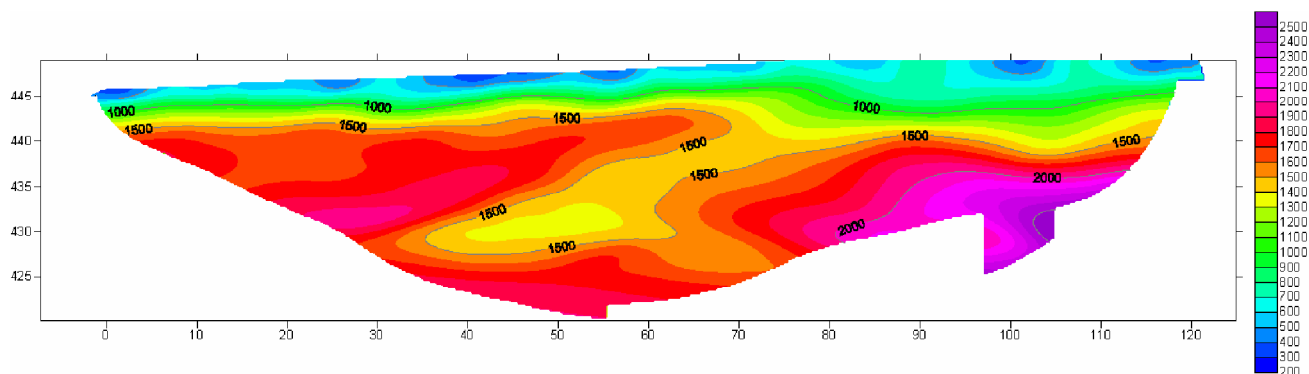
LINEA 13
ELABORAZIONE TOMOGRAFICA ONDE SH




IGEA s.a.s. di Guglielmo Braccesi e C. - Sede Legale Via Sappalatese, 128 - 50032 Borgo San Lorenzo (FI)
Sede Operativa Viale Mazzini, 4 - 50039 Vicchio di Mugello (FI) - Tel. e Fax 055 944025
C.F./P.I. 05351980486 - Iscr. C.C.I.A.A. Firenze R.I. 05351980486 - R.E.A. 540470 - www.igeasas.it

 IGEAS.A.S.	INDAGINI GEOLOGICHE ED AMBIENTALI							
	DOCUMENTI					REV.	FOLIO	
C	DOCUMENTI	2008	SAS2008	29	08	004	1	217

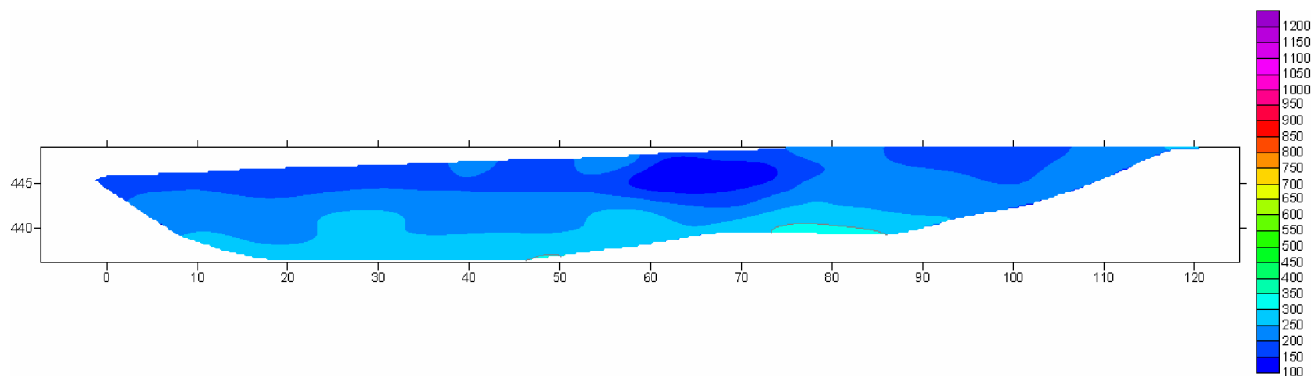
LINEA 14
ELABORAZIONE TOMOGRAFICA ONDE P




IGEAS a.s. di Guglielmo Braccetti e C. - Sede Legale Via Sappalatese, 128 - 50032 Borgo San Lorenzo (FI)
Sede Operativa Viale Mazzini, 4 - 50039 Vicchio di Mugello (FI) - Tel. e Fax 055 944025
C.F./P.I. 05351980486 - Iscr. C.C.I.A.A. Firenze R.I. 05351980486 - R.E.A. 540470 - www.igeasas.it

 IGEAS.A.S.	INDAGINI GEOLOGICHE ED AMBIENTALI							
	DOCUMENTI					REV.	FOLIO	
C	DOCUMENTI	2008	SAS2008	29	08	004	1	218

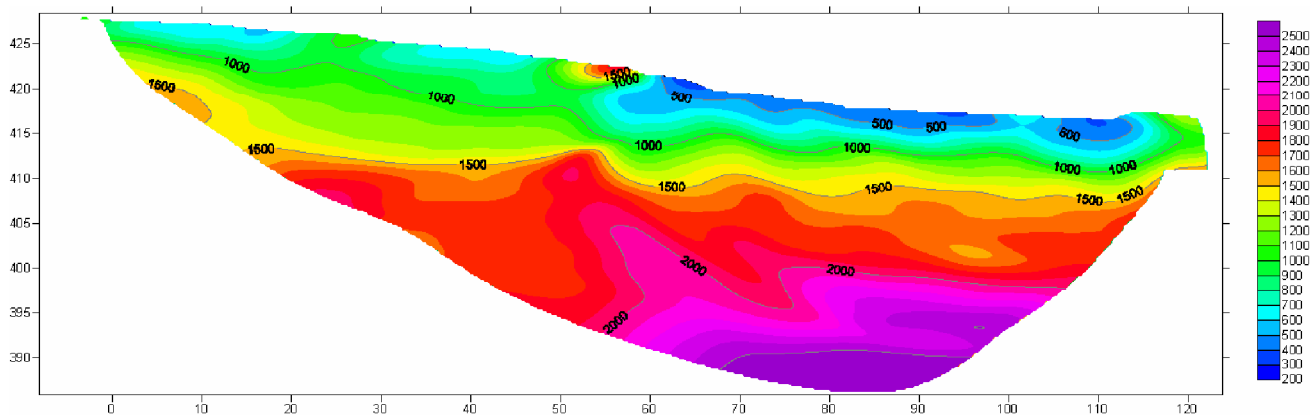
LINEA 14
ELABORAZIONE TOMOGRAFICA ONDE SH




IGEAS a.s. di Guglielmo Braccetti e C. - Sede Legale Via Sappalatese, 128 - 50032 Borgo San Lorenzo (FI)
Sede Operativa Viale Mazzini, 4 - 50039 Vicchio di Mugello (FI) - Tel. e Fax 055 944025
C.F./P.I. 05351980486 - Iscr. C.C.I.A.A. Firenze R.I. 05351980486 - R.E.A. 540470 - www.igeasas.it

 IGEA S.A.S.	INDAGINI GEOLOGICHE ED AMBIENTALI							
	CODICE DOCUMENTO						REV.	FOLIO
C	DOCUMENTI	2008	SAS2008	29	08	004	1	216

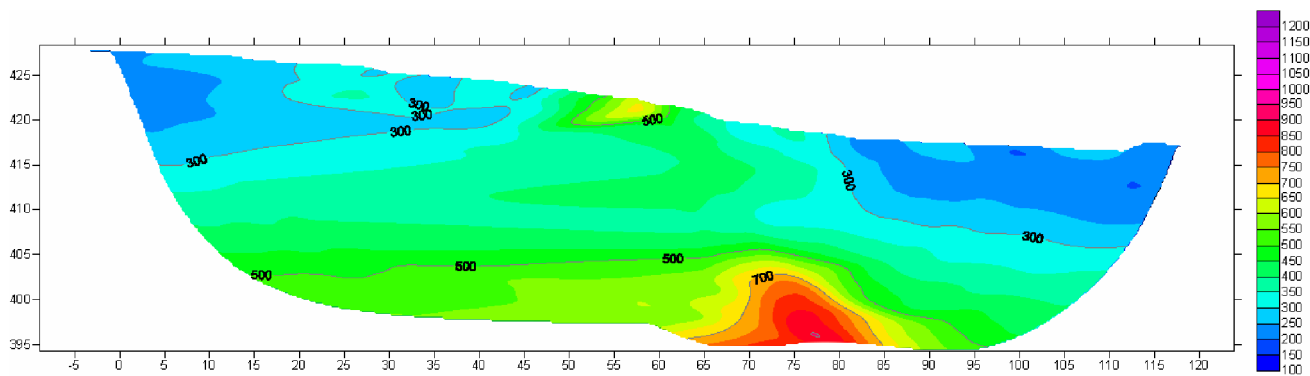
LINEA 20
ELABORAZIONE TOMOGRAFICA ONDE P



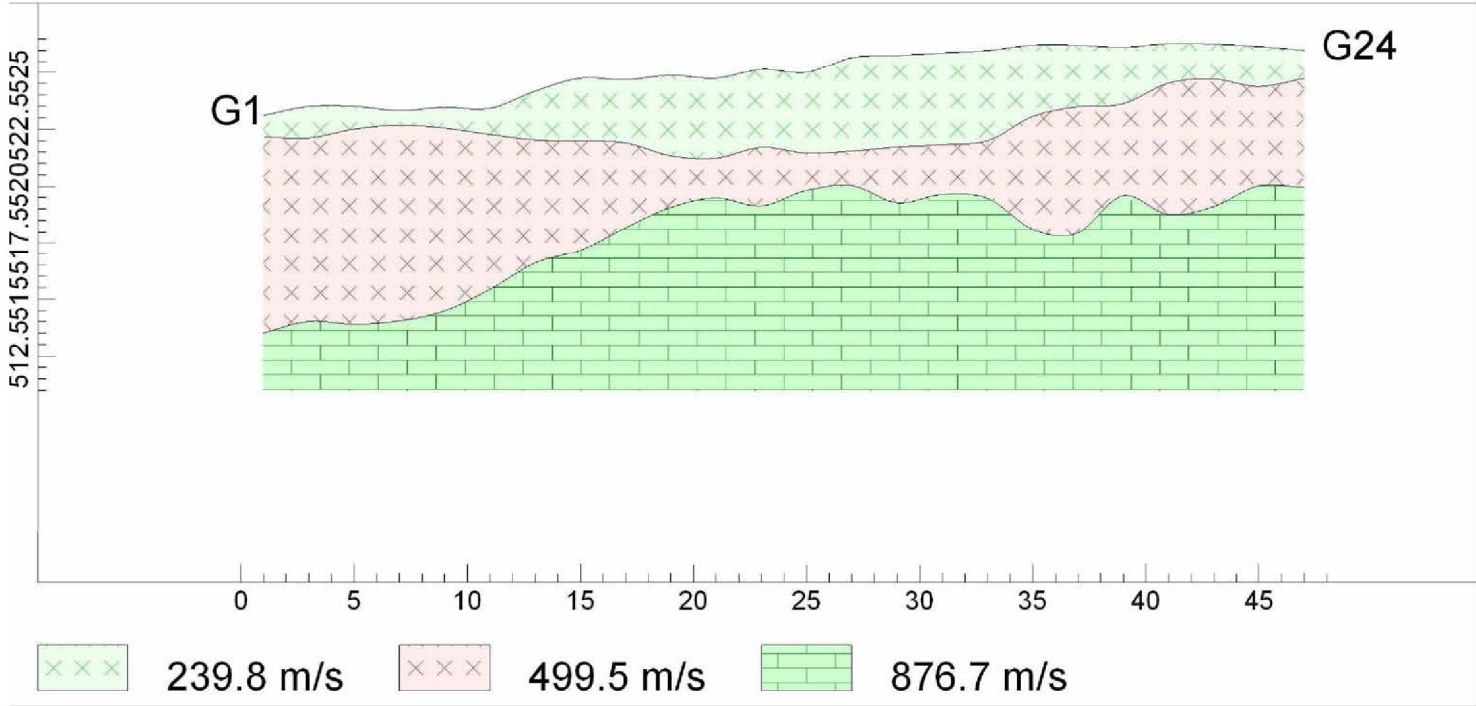
IGEA s.a.s. di Guglielmo Braccini e C. - Sede Legale Via Sappalutera, 128 - 50032 Borgo San Lorenzo (FI)
Sede Operativa Viale Mazzini, 3 - 50039 Vicchio di Mugello (FI) - Tel. e Fax 055 944025
C.F./P.I. 05351980486 - Iscr. C.C.I.A.A. Firenze R.I. 05351980486 - R.E.A. 540470 - www.igeasas.it

 IGEA S.A.S.	INDAGINI GEOLOGICHE ED AMBIENTALI							
	CODICE DOCUMENTO						REV.	FOLIO
C	DOCUMENTI	2008	SAS2008	29	08	004	1	216

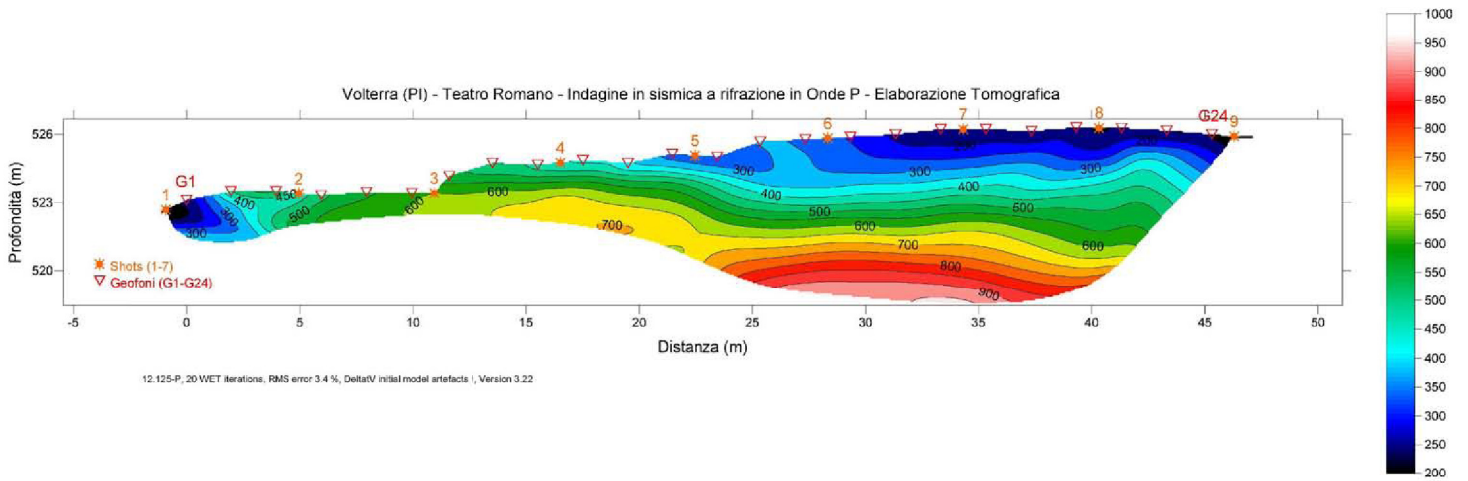
LINEA 20
ELABORAZIONE TOMOGRAFICA ONDE SH



IGEA s.a.s. di Guglielmo Braccini e C. - Sede Legale Via Sappalutera, 128 - 50032 Borgo San Lorenzo (FI)
Sede Operativa Viale Mazzini, 3 - 50039 Vicchio di Mugello (FI) - Tel. e Fax 055 944025
C.F./P.I. 05351980486 - Iscr. C.C.I.A.A. Firenze R.I. 05351980486 - R.E.A. 540470 - www.igeasas.it



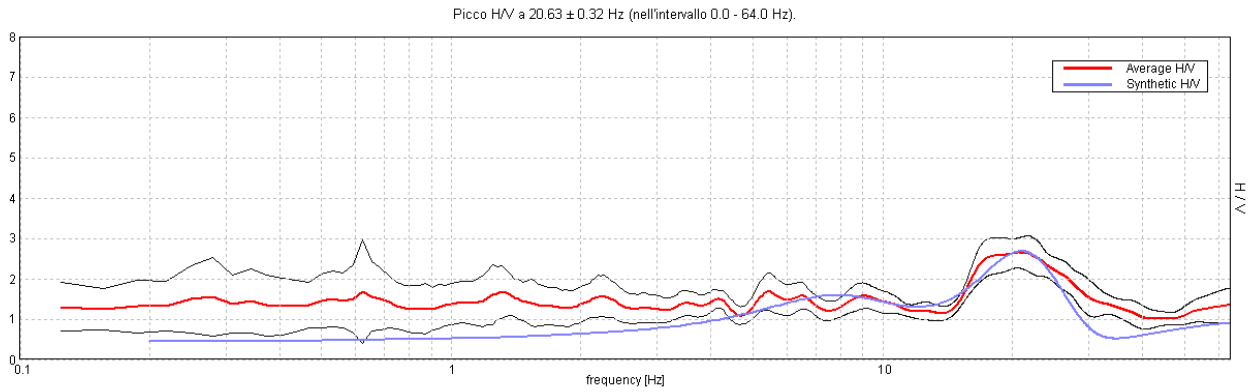
Sismica a rifrazione in onde P – Elaborazione tradizionale – Velocità dei rifrattori – Scala 1:250



Sismica a rifrazione in onde P – Elaborazione Tomografica – Scala 1:250

INDAGINI TROMOMETRICHE

H/V SPERIMENTALE vs. H/V SINTETICO



Profondità alla base dello strato

[m]

0.60

3.30

16.30

inf.

Spessore [m]

0.60

2.70

13.00

inf.

Vs [m/s]

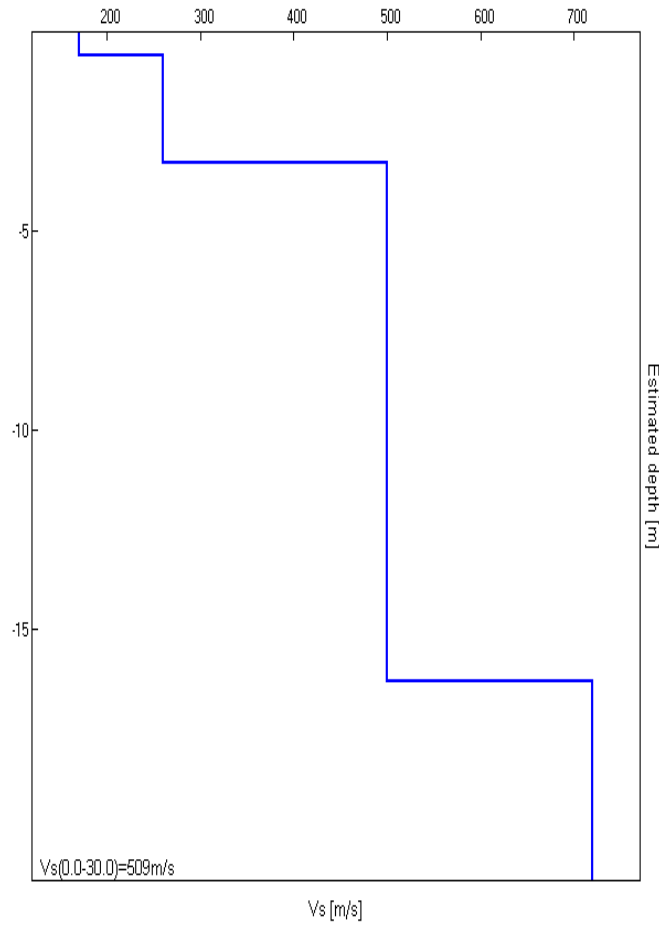
170

260

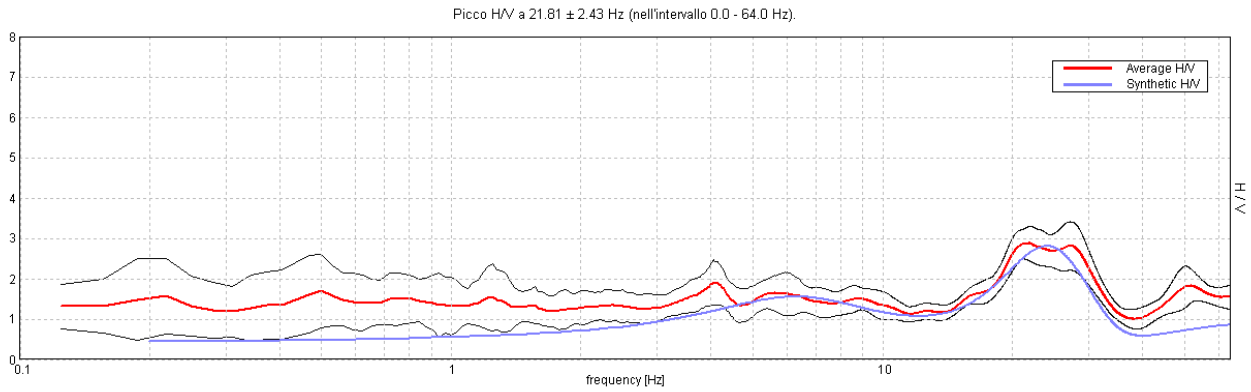
500

720

Vs(0.0-30.0)=509m/s



H/V SPERIMENTALE vs. H/V SINTETICO



**Profondità alla base dello strato
[m]**

Spessore [m]

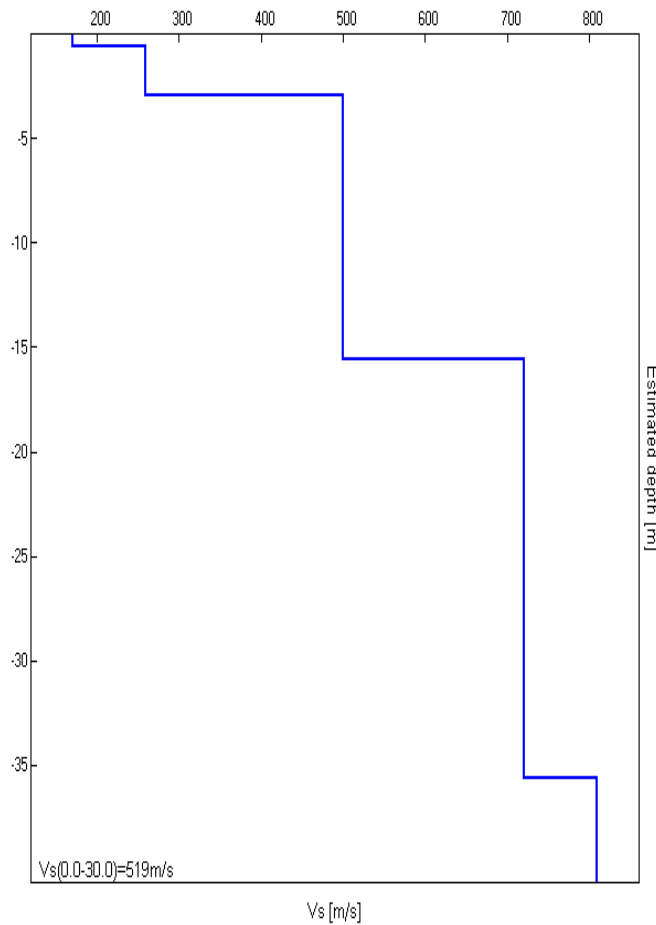
Vs [m/s]

0.60
2.90
15.60
35.60
inf.

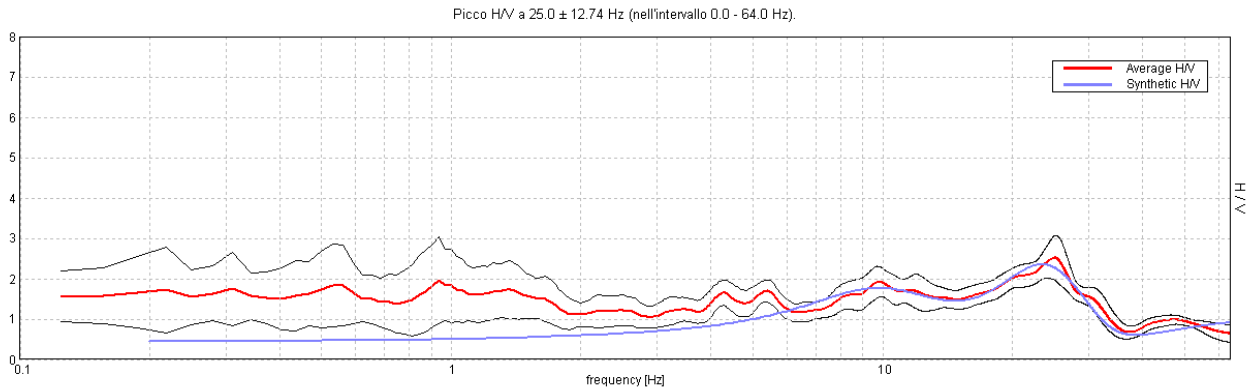
0.60
2.30
12.70
20.00
inf.

170
260
500
720
810

Vs(0.0-30.0)=519m/s



H/V SPERIMENTALE vs. H/V SINTETICO



Profondità alla base dello strato

[m]

0.60

3.10

13.60

inf.

Spessore [m]

0.60

2.50

10.50

inf.

Vs [m/s]

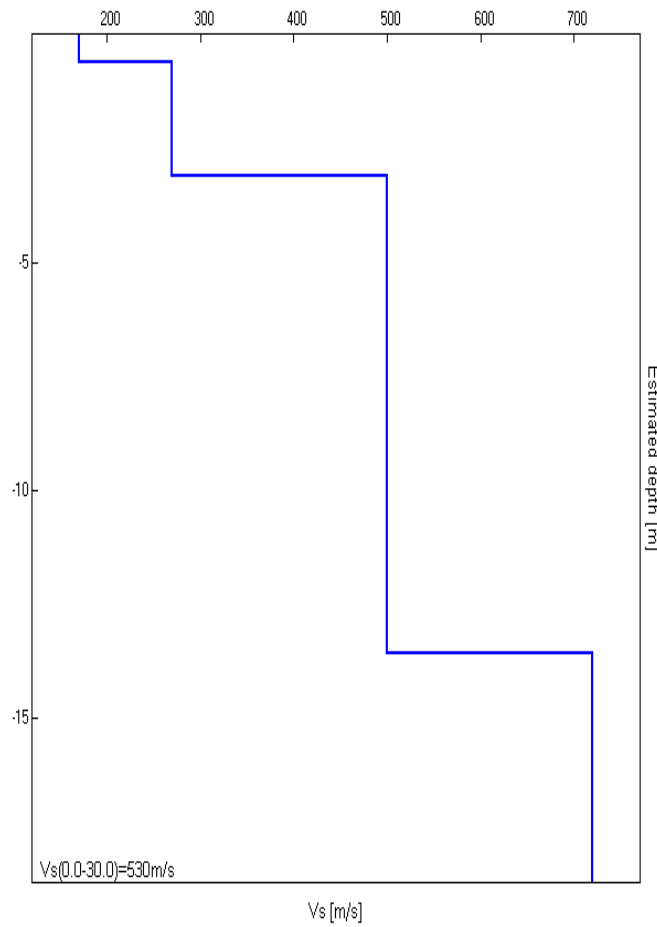
170

270

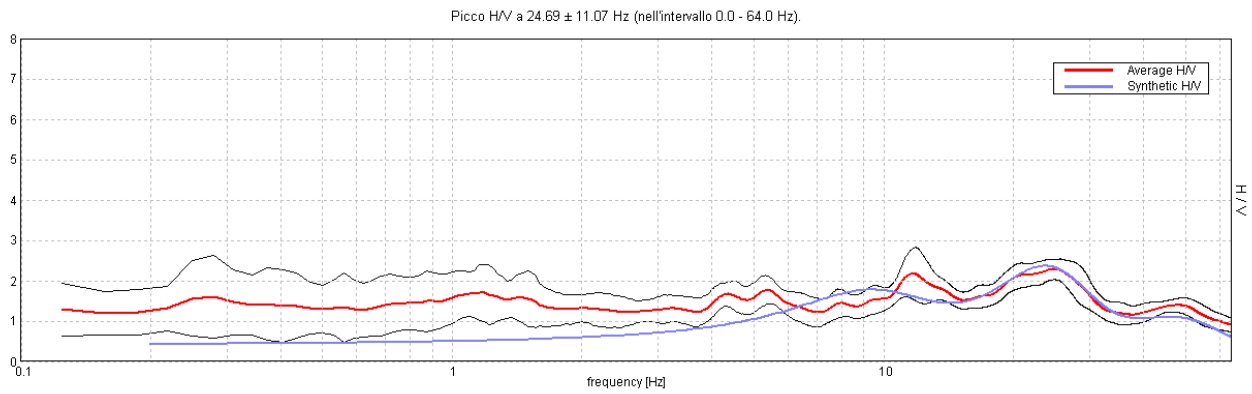
500

720

Vs(0.0-30.0)=530m/s



H/V SPERIMENTALE vs. H/V SINTETICO



Profondità alla base dello strato

[m]

0.90
3.60
14.10
inf.

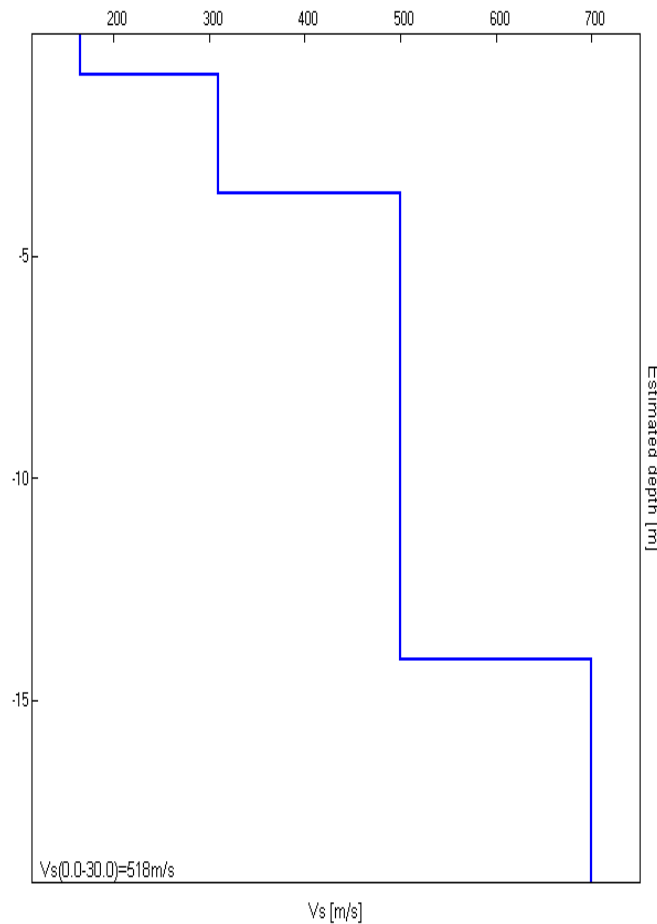
Spessore [m]

0.90
2.70
10.50
inf.

Vs [m/s]

165
310
500
700

Vs(0.0-30.0)=518m/s



J12_125_11_08_VOLTERRA_TR, TEATRO ROMANO TR5

Strumento: TEP-0085/01-10

Inizio registrazione: 08/11/12 16:15:51 Fine registrazione: 08/11/12 16:29:52

Nomi canali: NORTH SOUTH; EAST WEST ; UP DOWN

Dato GPS non disponibile

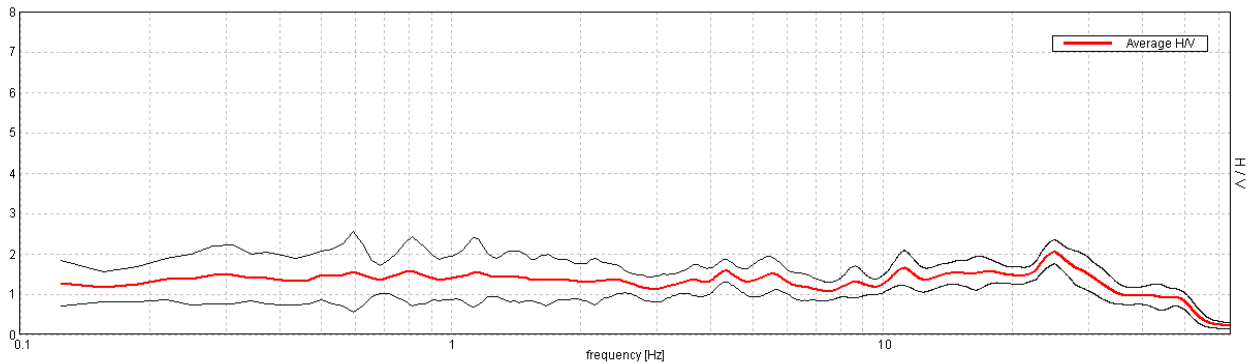
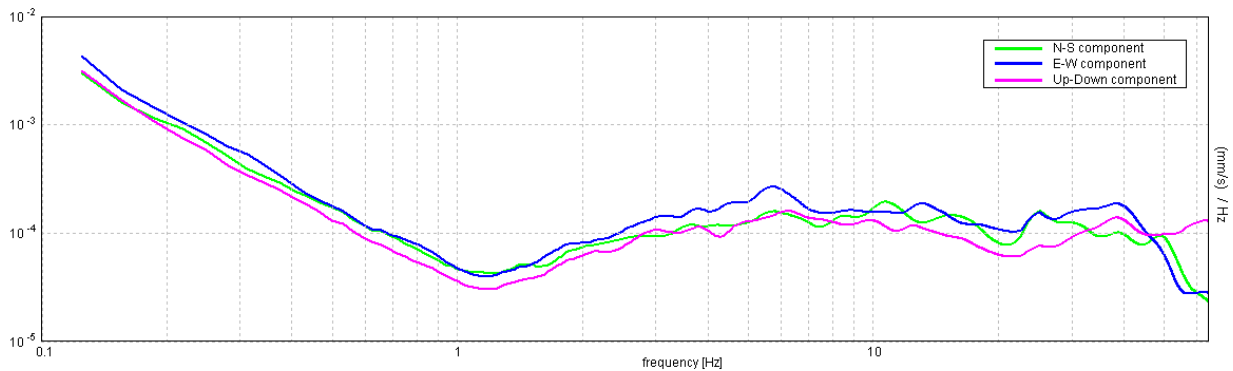
Durata registrazione: 0h14'00". Analizzato 90% tracciato (selezione manuale)

Freq. campionamento: 128 Hz

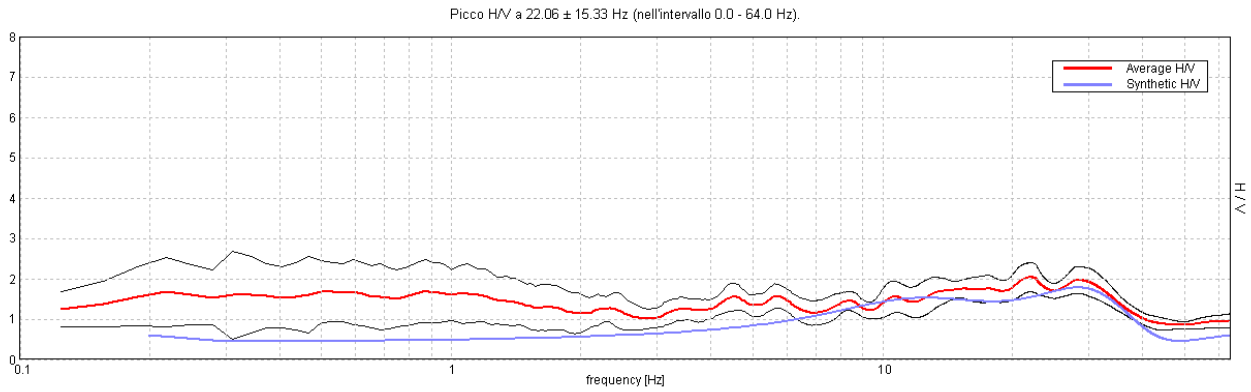
Lunghezza finestre: 20 s

Tipo di lisciamento: Triangular window

Lisciamento: 10%

RAPPORTO SPETTRALE ORIZZONTALE SU VERTICALEPicco HVV a 25.0 ± 10.44 Hz (nell'intervallo 0.0 - 64.0 Hz).**SPETTRI DELLE SINGOLE COMPONENTI**

H/V SPERIMENTALE vs. H/V SINTETICO



**Profondità alla base dello strato
[m]**

Spessore [m]

Vs [m/s]

0.20
2.30
9.30
17.30
inf.

0.20
2.10
7.00
8.00
inf.

160
260
500
650
710

Vs(0.0-30.0)=561m/s

