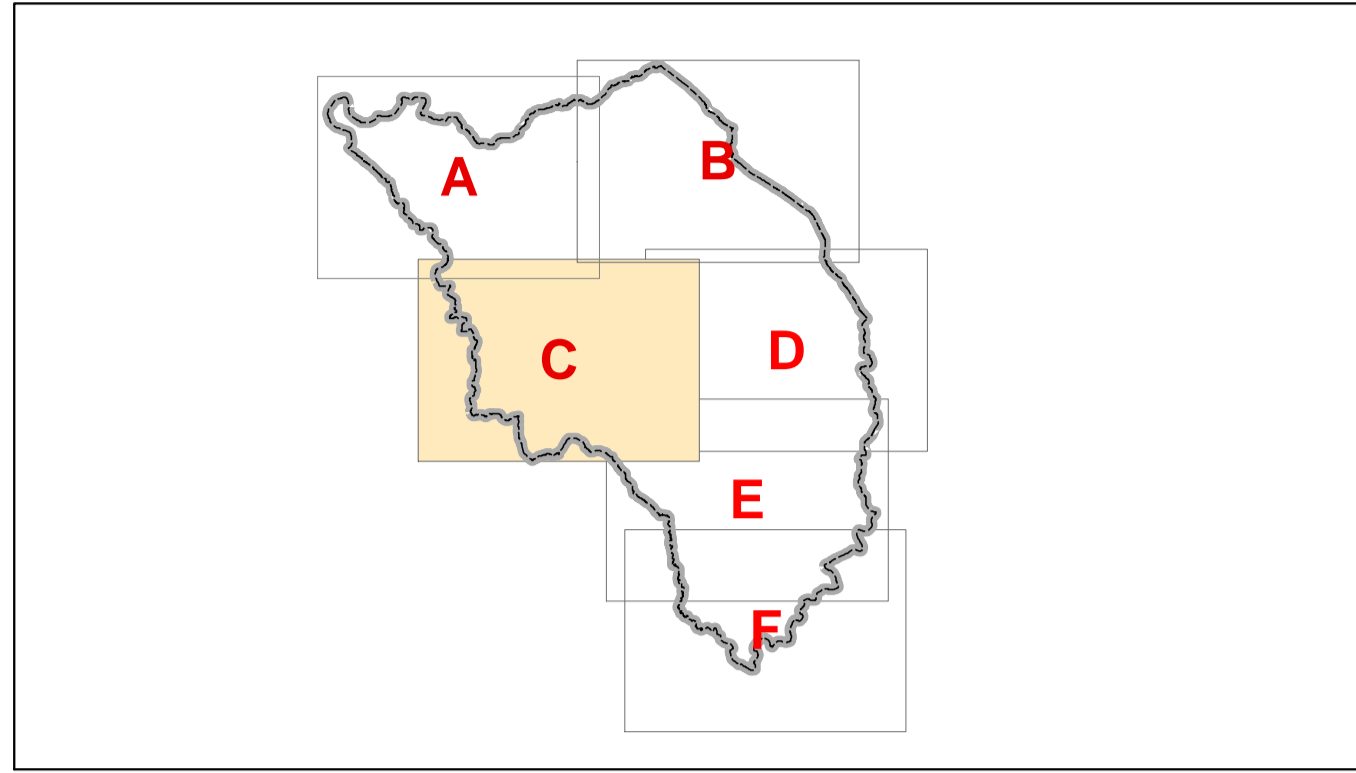




**PIANO OPERATIVO**  
art. 95 della L.r. 65/2014

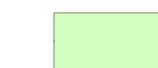






CARTA DELLE AREE A PERICOLOSITA' GEOMORFOLOGICA TAV. 1/c

Marzo 2016 Scala 1:10.000

Il Geologo  
Dott. Franco Duranti

**LEGENDA**

-  Pericolosità geomorfologica media (G.2)
-  Pericolosità geomorfologica elevata (G.3) - P.F.E
-  Pericolosità geomorfologica molto elevata (G.4) - P.F.M.E
-  P.F.M.E - Aree a pericolosità geomorfologica molto elevata
-  limite comunale

