

**Sindaco**  
Silvio Franceschelli

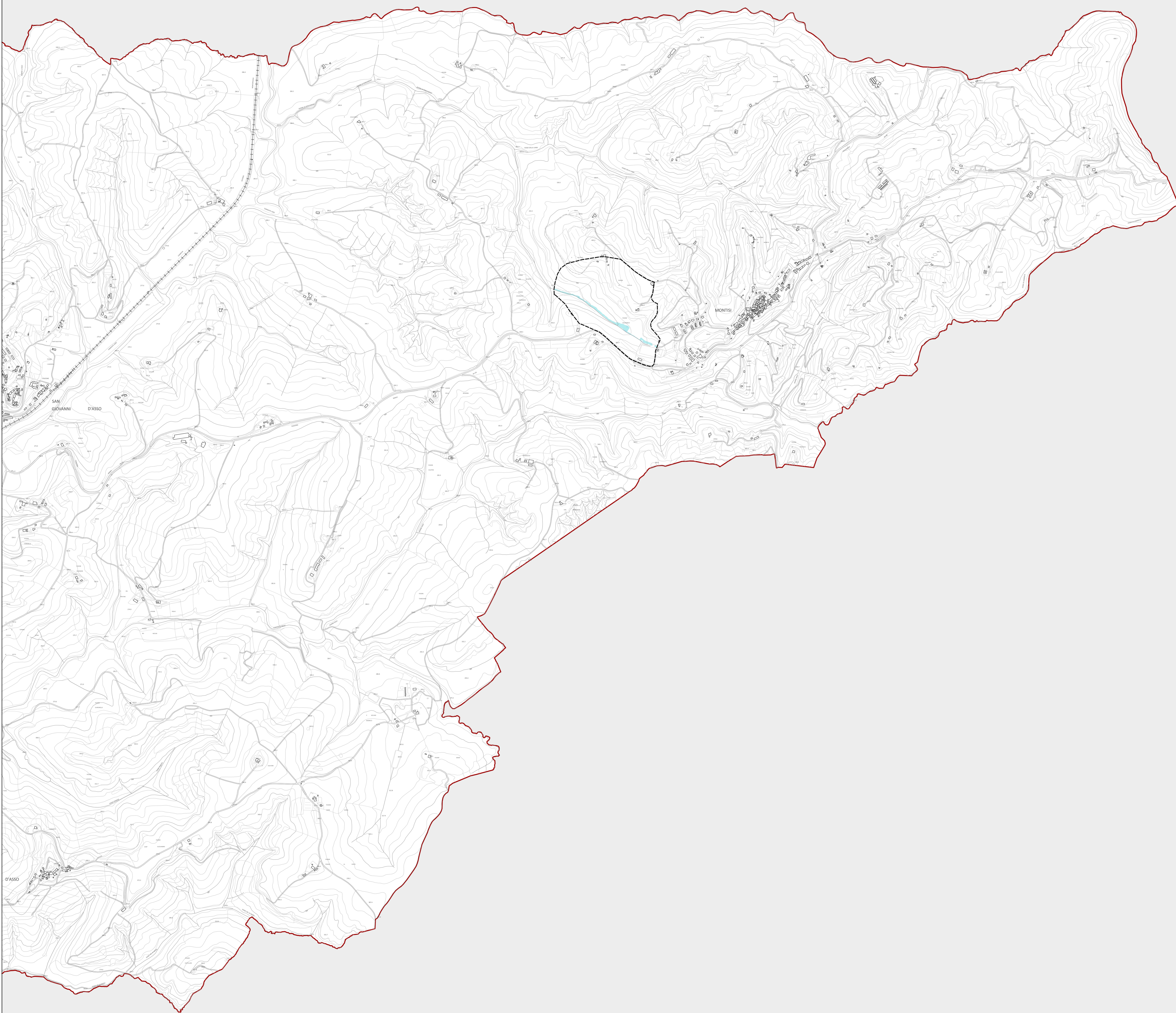
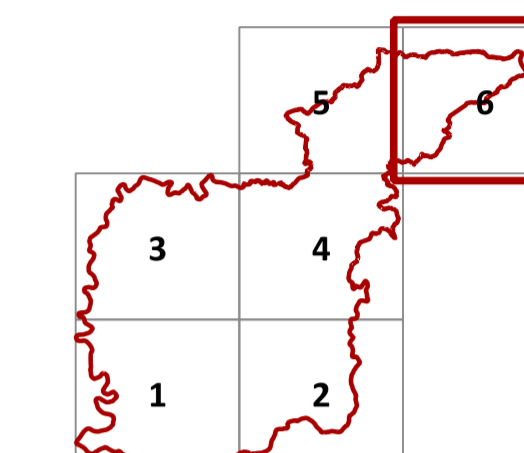
**Responsabile del procedimento**  
Paolo Giannelli

**Garante dell'informazione e della partecipazione**  
Alessandro Caferri



## SI.1 - Carta dei Battenti

**Gruppo di lavoro**  
Roberto Vezzosi, capogruppo  
Stefania Rizzotti, Idp studio  
Massimiliano Rossi, Fabio Poggi, Davide  
Giovannuzzi, Mirko Frasconi, Matteo Frasconi,  
ProGeo Engineering s.r.l.  
Laura Galmacci, Nicolò Battistoni  
Monica Coletta, Studio Tecnico Agostoli di  
Coletta, Frassinetti, Sarrica  
Stefano Campana  
Martina Romeo  
Maria Rita Cecchini (VAS)  
Massimo Tofanelli






S c a l a  
1:110.000



### LEGENDA

-  Confine Comunale
-  Area all'interno della quale sono condotti studi idrologici e idraulici

### BATTENTI

-   $h \leq 0,5 \text{ m}$
-   $0,5 \text{ m} \leq h < 1 \text{ m}$
-   $1 \text{ m} \leq h < 1,5 \text{ m}$
-   $1,5 \text{ m} \leq h < 2 \text{ m}$
-   $h \geq 2 \text{ m}$