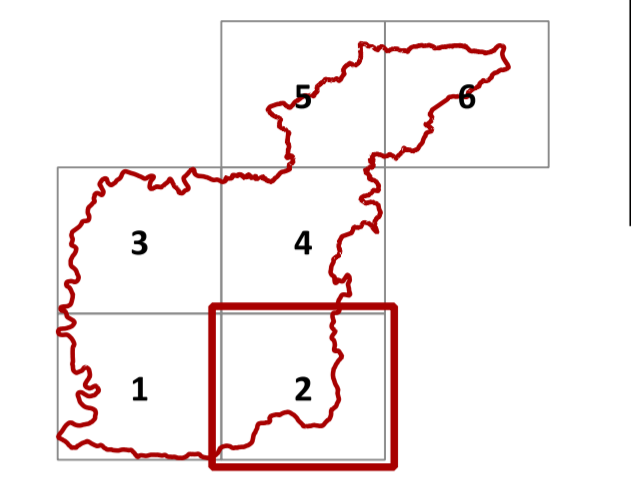


SI.1 - Carta dei Battenti



Gruppo di lavoro
Roberto Vezzosi, capogruppo
Stefania Rizzotti, Idp studio
Massimiliano Rossi, Fabio Poggi, Davide Giovannuzzi, Mirko Frasconi, Matteo Frasconi, ProGeo Engineering s.r.l.
Laura Galmacci, Nicolò Battistoni
Monica Coletta, Studio Tecnico Agostoli di Coletta, Frassinetti, Sarrica
Stefano Campana
Martina Romeo

Maria Rita Cecchini (VAS)
Massimo Tofanelli






Scala
1:110.000



LEGENDA

-  Confine Comunale
-  Area all'interno della quale sono condotti studi idrologici e idraulici

BATTENTI

-  $h \leq 0,5 \text{ m}$
-  $0,5 \text{ m} \leq h < 1 \text{ m}$
-  $1 \text{ m} \leq h < 1,5 \text{ m}$
-  $1,5 \text{ m} \leq h < 2 \text{ m}$
-  $h \geq 2 \text{ m}$