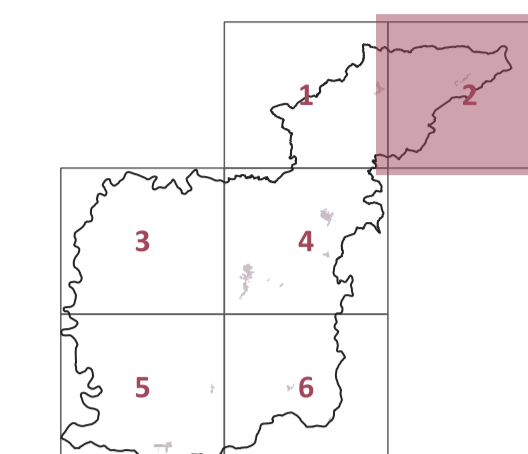




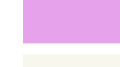



ZONE TERRITORIALI OMOGENEE DM 1444/68



PROGETTO
Roberto Vezzosi (capogruppo)
Stefania Rizzotti, Idp studio
Massimiliano Rossi, Fabio Poggi, Mirko Frasconi, Davide Giovannuzzi,
ProGeo Engineering s.r.l.
Monica Coletta, Studio Tecnico Agostoli di Coletta, Frassinetti, Sarrica
Stefano Campana
Valentina Vettori
con
Flavia Giallorenzo, Martina Romeo, Letizia Rossignolo, Massimo Tofanelli
Maria Rita Cecchini e Arianna Gaglietta (VAS)

novembre 2023

**Legenda
Dm 1444/68**

	Zona A
	Zona B
	Zona C
	Zona D
	Zona E
	Zona F

tav 2
10000

