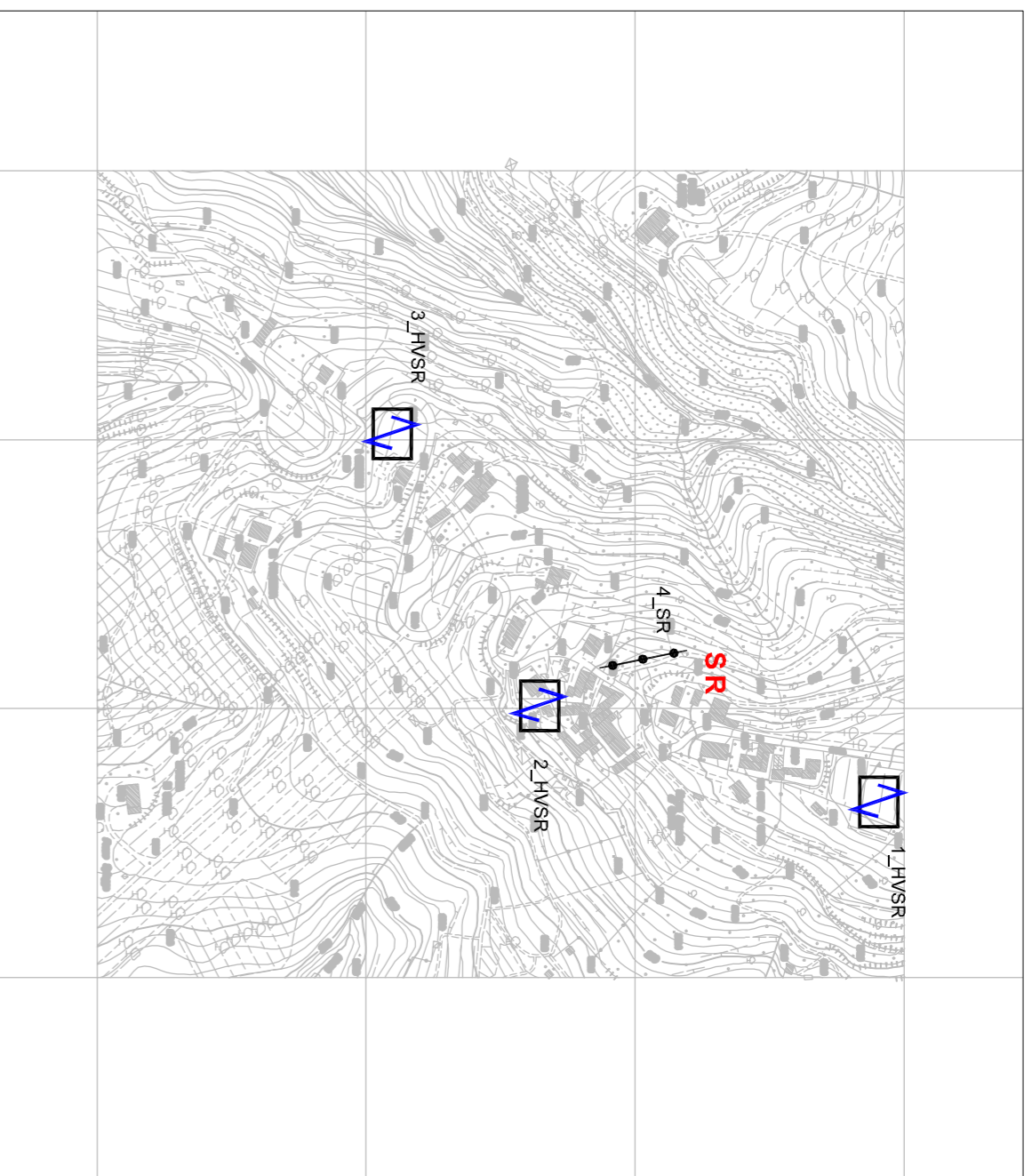
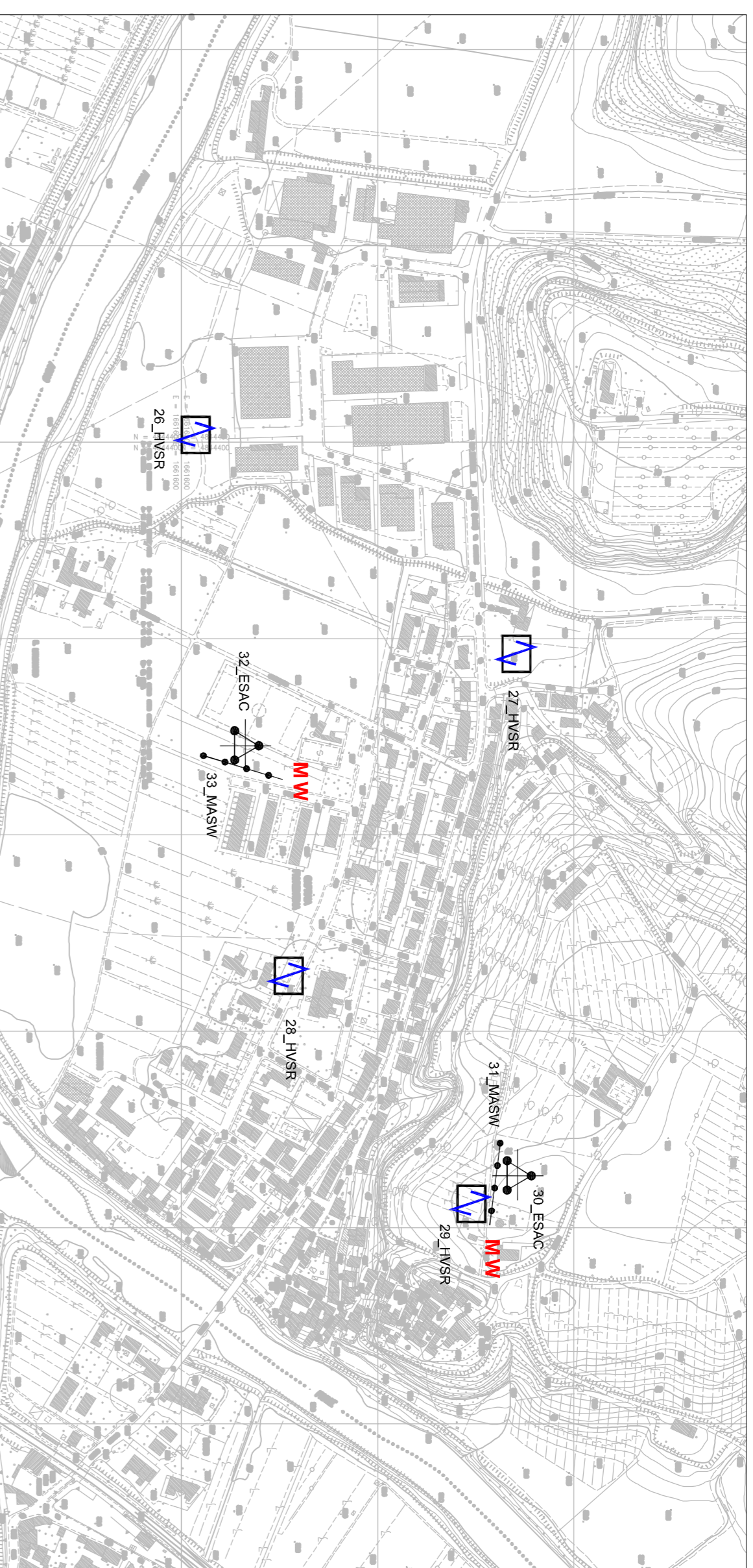


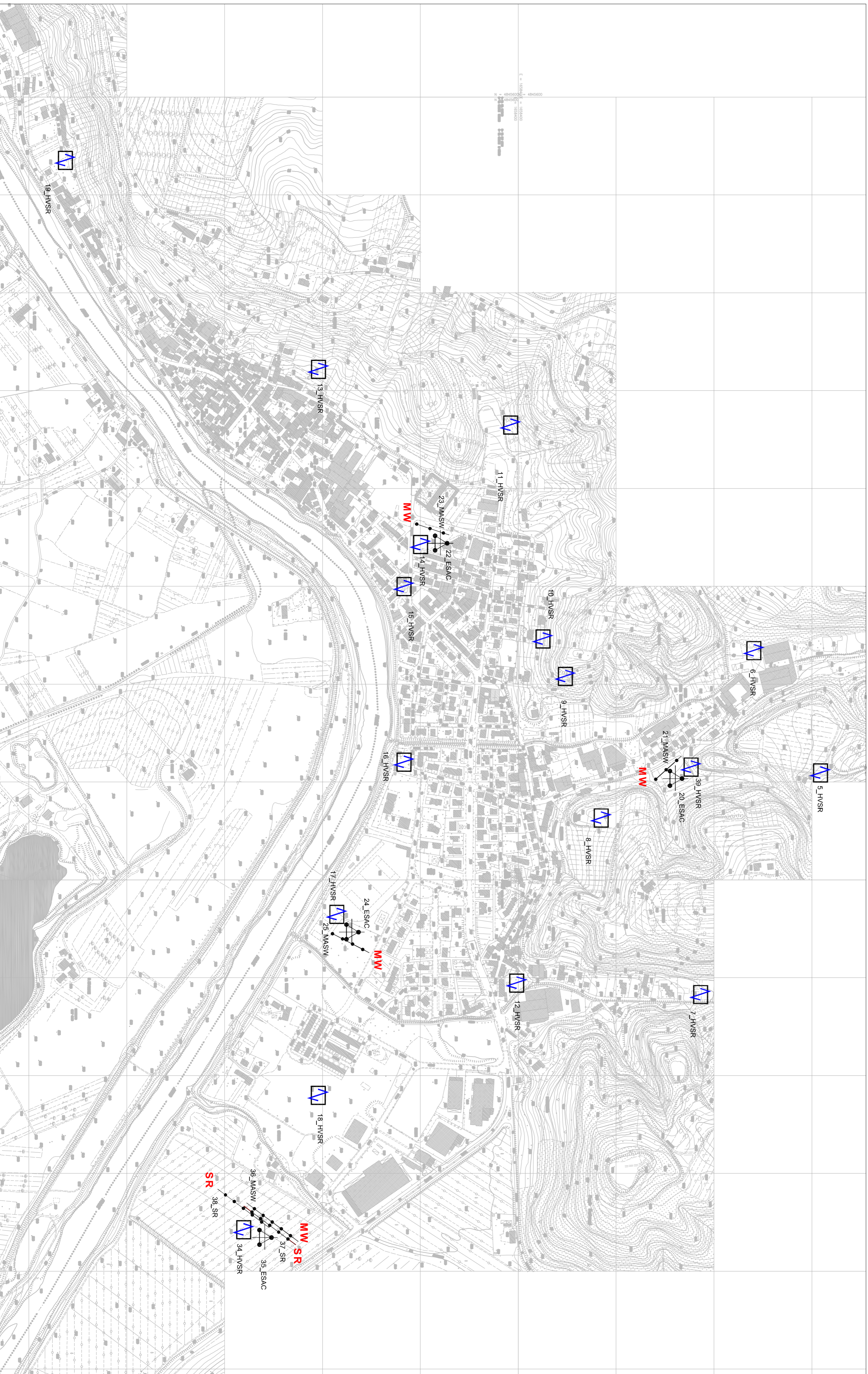
CASTRA - SCALA 1:5.000



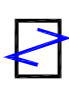
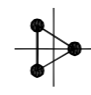
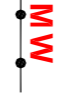

CAPRAIA - SCALA 1:5.000



LIMITE - SCALA 1:5.000



LEGENDA

-  STAZIONE MICROTREMORE A STAZIONE SINGOLA
-  ARRAY SISMICO ESAC
-  MASW
-  PROFILO SISMICO A RIFRAZIONE ONDE P E SH



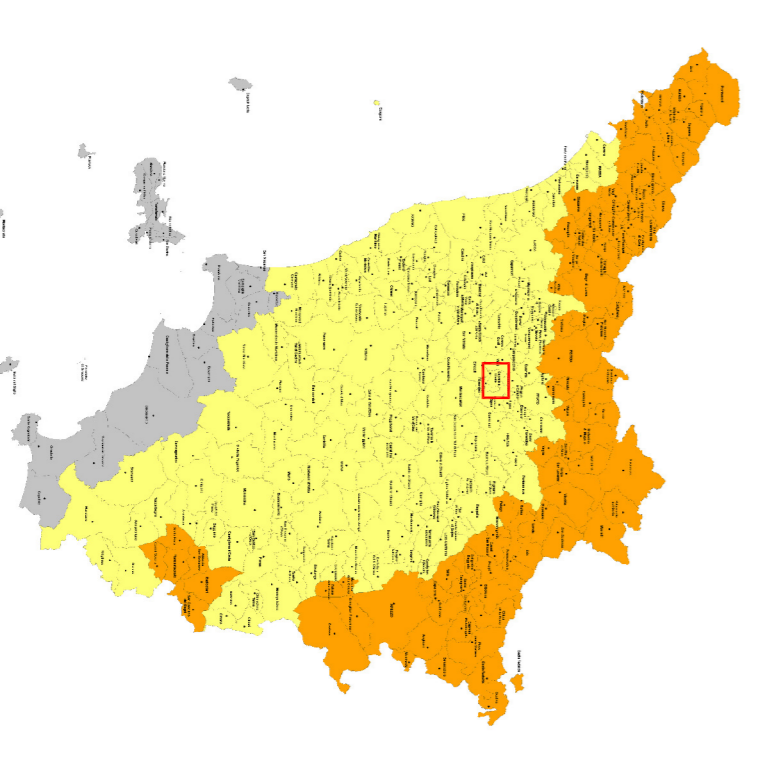
SUPPORTO ALLA VARIANTE AL
REGOLAMENTO URBANISTICO

MICROZONAZIONE SISMICA TAV: 01 - Carta delle indagini

scala 1 : 5.000

Regione Toscana
Comune di Capraia e Limite (FI)

MARZO 2014



COORDINATORE DEL PROGETTO:



Geoconsorzi
ENKI
Consorzio di Capraia e Limite

ESECUZIONE INDAGINI:



ENKI
INGEGNERIA

COLLABORAZIONE ALLE INDAGINI:



G.A.
Geotecnica